

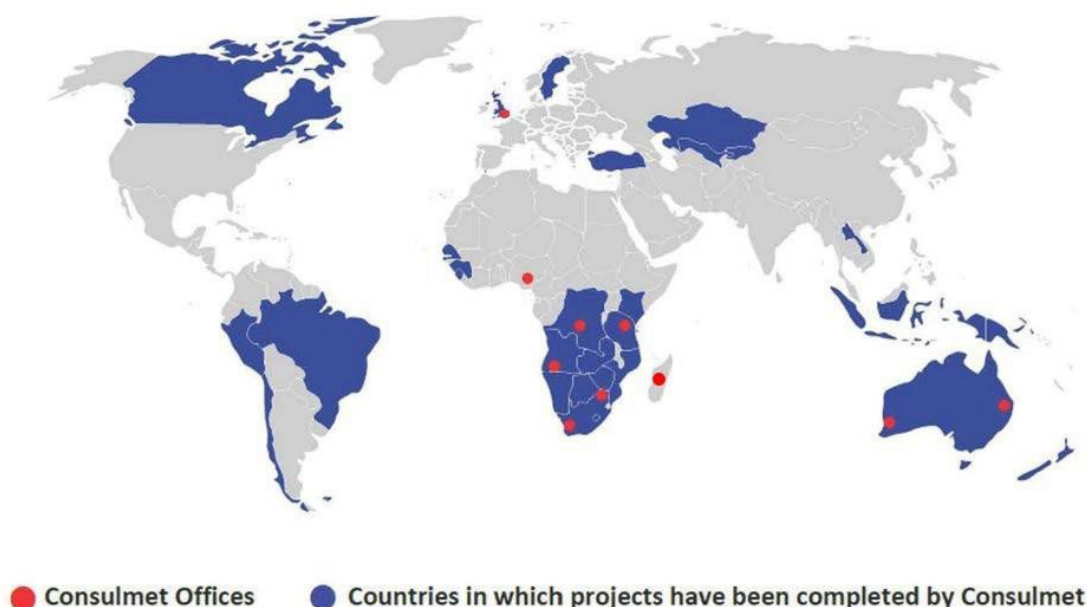


CAPABILITY PROFILE 2026



Table of CONTENTS

Consulmet Business Details	3
Consulmet Capabilities	4
Our Services.....	5
Our Focus	6
Import Export Logistics	10
Preferred Partnerships.....	12
Our Awards	12
Our Team	16
Our Offices	17
Services	18
Our projects	19
Profile Of Experience	52



Our

DETAILS



SOUTH AFRICA

Johannesburg, Gauteng

www.consulmet.com

Consulmet (Pty) Ltd

enquiries@consulmet.com

Tel: +27 (0)11 608 0396

Fax: +27 (0)11 608 3853/608 0996

15 Friesland Drive
Longmeadow Business Estate South
Modderfontein 1644 Johannesburg Gauteng

PO Box 93, Longmeadow,
1609 Johannesburg,
South Africa

Co. Reg No
2005/013599/07
VAT Reg No
4060188846

SARS Customs Code
No. 1845797

Derek Lahee

+27 (0)83 325 3374

derek@consulmet.com

Gavin Boyle

+27 (0)82 854 6564

gavin@consulmet.com

Justin Macnab

+27 (0)82 783 3084

justin@consulmet.com

Wildu Mostert

+27 (0)82 801 1894

wildu@consulmet.com

Consulmet SA (Pty) Ltd

enquiries@consulmet.com

Tel: +27 (0)11 608 0396

Fax: +27 (0)11 608 0996

15 Friesland Drive
Longmeadow Business Estate South
Modderfontein 1644 Johannesburg Gauteng

PO Box 93, Longmeadow,
1609 Johannesburg,
South Africa

Co. Reg No
2017/087972/07 VAT
Reg No 4250281104

Lwazi Ngubevana

+27 (0)66 186 8706

lwazin@consulmet.com

DETAILS

AFRICA



DRC, Africa

www.consulmet.com

Consulmet DRC (Pty) Ltd DRC, Lubumbashi



8468 Route Kinsevere, Quarter Joli-Site,
Commune Annexe,
Ville de Lubumbashi, DRC

Willy Ilunga Maloba

+243 9970 32 934

Reg No: 2027/2012

Willy@consulmet-drc.com

Mauritius, Africa

www.consulmet.com



Mauritius, Africa

Consulmet

Level 8, NeXteracom Tower III,
Rue de Savior, Cybercity,
Ébène, Mauritius

David Lilachand

+(230)463 41 92 (Office)

+(230) 5971 3001 (Mobile)

DavidL@consulmetafrica-mu.com

Mozambique, Africa

www.consulmet.com



Mozambique, Africa

Consulmet

Mozambique, City of Maputo,
District of Kamavota,
Polana, Julius Nyerere Avenue,
1st Floor left, flat 1, n°466

Carlos Correia

+258 84 501 2560

Carlos.correia@consullda.com



AUSTRALIA

Perth + Brisbane

www.consulmet.com.au

Australia

www.consulmet.com.au

Australia, Perth

Consulmet

Level 28, AMP Tower 140 St. Georges Terrace,
Perth, Western Australia, 6000
+61 (0)8 6102 7740

Australia, Brisbane

Consulmet

U14/99 Musgrave Road
Red Hill 4059
Queensland, Australia, 4059
+61 (0)7 3102 3169
australia@consulmet.au

David Fuller

+61 (0)419 577 979

david.fuller@consulmet.com.au



INTERNATIONAL

London, United Kingdom

www.consulmet.com

Consulmet International, London, United Kingdom

6 St James's Square,
St. James's
London SW1Y 4JU
United Kingdom

Antony Rayment

+27 (0)82 871 8879

+44(0)7 9905 13447

antonyr@consulmetuk.com

TÜRKİE

Bariş Karadağ

+90 531 220 2006

barisst@consulmetuk.com

Our

CAPABILITIES

Consulmet is a specialised Technology and Project-house serving the mineral processing industry through the design, supply and construction of Production Ready Plants, hence the concept of **Scalability, Availability and Reliability**. All our clients have benefited significantly from the positive impact of Consulmet's **Production Ready** concept, by reducing project capital costs, compressing delivery schedules and simplifying operations. Our clients include exploration, junior and major mining companies in the pursuit of mineral and metal beneficiation in developed and developing regions.



Full Turnkey Coal Wash Plant



The following services are offered by the **Consulmet Group**:

- LSTK/EPC project execution
- EPCM project execution
- Feasibility studies
- Detailed design of process plant
- Civil and structural engineering
- Electrical and instrumentation design
- Mechanical and plate-work design
- Engineering consulting
- Infrastructure design and development
- Procurement of all infrastructure equipment
- Metallurgical test work campaigns
- Operation and maintenance of process plant
- Design, construction and operation of tailings storage facilities (TSF)
- Logistical services
- Commissioning and training
- Existing process plant audits & debottlenecking
- Plant upgrades and retrofits
- Security systems
- Spares and commodities

All services are offered in the following fields of processing:

- Ore preparation
- Materials handling
- Hydro-metallurgical
- Pyro-metallurgical
- Chlor-alkali



Our FOCUS

Our focus has predominantly been on turnkey beneficiation, extraction and recovery plants for the processing of diamonds, heavy minerals, coal and gold. We have expanded our project execution services to cater for the design and supply of PGM and Base Metal processing facilities. Consulmet also design and manufacture a range of reagent storage, mixing, distribution and dosing solutions.

Consulmet offers its services to the following processing industries:

- Diamonds
- Coal
- Gold
- Heavy minerals
- Precious metals
- Base metals
- Water treatment
- Iron ore
- Manganese
- Chromite
- Chemical
- Rare earth elements (REE's)
- Reagents

Led by Engineers, Consulmet has a strong technical capability which is further complemented by a top-quality professional drawing office. State-of-the-art drafting packages are employed and continually updated to incorporate the latest technology in our designs. Consulmet's engineers are experienced in the design of the following unit operations:

- | | |
|-------------------------------|--------------------------------|
| ➤ Ore sorting | ➤ Pumping |
| ➤ Crushing | ➤ Solvent extraction |
| ➤ Milling | ➤ Electrowinning |
| ➤ Dense media separation | ➤ Precipitation |
| ➤ Concentrating | ➤ Purification |
| ➤ Flotation | ➤ Clarification |
| ➤ Conveying of materials | ➤ Calcining |
| ➤ Classification | ➤ Smelting |
| ➤ De-watering | ➤ Evaporation |
| ➤ Filtration | ➤ Crystallization |
| ➤ Agitation | ➤ Cooling/heating |
| ➤ Leaching | ➤ Water treatment |
| ➤ Counter current decantation | ➤ Thickening |
| ➤ Elution | ➤ Water recovery and treatment |
| ➤ Pumping | |



Modular & bespoke mineral & metal processing plants

Consulmet specialises in the application of modular and bespoke recovery solutions for the mining and exploration sector of the minerals industry predominantly on the African continent.

The modular technologies can create the bridge between subsistence based artisanal level mining or exploration activities and the large economies of scale operations. In essence it provides a mechanism for tapping into the inherent mineral wealth of a massive market which has remained largely untapped.

DMS plants

Consulmet DMS (Dense media separation) plants can be used for processing of any minerals that can be separated based on a difference in density between the target product and the host ore e.g. diamonds, coal, iron ore, copper, and base and precious metal pre-concentration. The Consulmet DMS units incorporate the latest innovations in DMS plant design resulting in improved recovery efficiencies, ferrosilicon/magnetite recovery and ease of operation and maintenance.

The largest modular installation supplied to date by Consulmet is the 450 tph DMS plant with integrated catch sump at a coal mine situated near Delmas in South Africa.

The Consulmet range of standard modular DMS modules are:

2tph	10tph	20tph	30tph	50tph	65tph
75tph	100tph	132tph	150tph	200tph	450tph

A few features of the Consulmet range of DMS Plants are:

- Provides improved separation than can be achieved using jigs.
- Available in gravity and pump fed configurations.
- Media densification module that has a reduced footprint and height compared to a conventional DMS circuit.
- Selection of optimal single-stage magnetic separators and densifiers to ensure that ferrosilicon/magnetite quality is not compromised whilst achieving industry-leading low ferrosilicon/magnetite consumption.
- Feed preparation module.
- Ferrosilicon/magnetite recovery module.
- Nuclear and non-nuclear automated density control.
- Dense media cyclone and product washing
- Modules can be fully skid mounted to eliminate concrete foundation works.

Feed preparation circuits (ore receiving and crushing) can be customised for the required throughput.



PGM and base metal processing & recovery plants ---

Consulmet has abundant experience in the field of PGM and Base Metal processing, having executed numerous studies and PGM and base metal process and recovery plant design, supply, and commission projects in Africa.

Gold recovery and beneficiation plants ---

Supplemental to our top-class process engineers, design and drawing office and execution capabilities we pride ourselves on the following points giving us the “edge” when it comes to gold processing:

- Intensive knowledge on all forms of gold
- Intensive knowledge on cyanide destruction
- Intensive knowledge on cyanide recycling and recovery
- In depth research on the sourcing of suitable equipment at best possible rates without compromising quality, availability, and reliability.
- Recovery including gravity recovery and leaching.

Consulmet’s gold processing and recovery plants can be configured in various sizes depending on throughput requirements. The standard designs are designated by size:

➤ Containerised	: 5tph to 10tph	Alluvial ores
➤ Mobile	: 30tph	Oxide ores
➤ Modular	: 50tph and 100tph	Oxide & sulphide ores
➤ Bespoke	: Any tonnage	Oxide & sulphide ores and gold tailings

Feed preparation circuits (Ore receiving, crushing, milling and de-watering) can be customised for the required throughput.

Gold tailings reclamation and recovery plants ---

- Hydraulic reclamation
- Screening & pumping
- Slurrying & pumping
- Flotation, milling and thickening (if required)
- Leaching
- Carbon processes
- Gold recovery
- Carbon regeneration
- Cyanide recovery and/or destruction
- Tailings disposal and environment



Consulmet offers the following services:

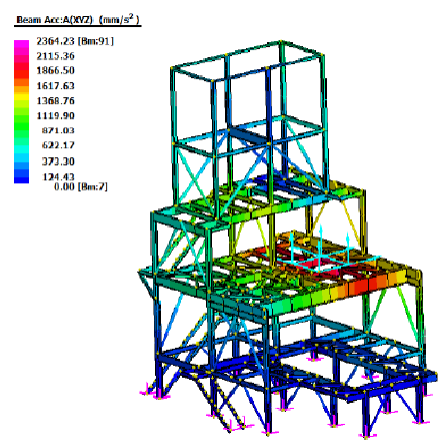
- Scrubbing and screening testing facilities for scrubber index calculations.
- 5tph DMS sampling plant
- Heavy liquid separation for wash ability analysis
- Rock hardness and crushability tests



Cube test with all concrete work



Cube test on concrete



Structural analysis

The potential for small scale mining projects in developing countries is great, with many suitable sites already identified in various locations and several countries. Consulmet has a project implementation and partnership philosophy that incorporates extensive training of client appointed personnel aimed at empowerment and competency. Local circumstances vary depending on the country and even the location of such operations, although it is evident that small scale mining can develop at a brisk pace and provide widespread benefits in developing countries.

Consulmet supplies its range of innovative solutions to clients in Africa, Western and Eastern Europe with great success and is focused on a greater drive to diversify its client portfolio to include other parts of the world.



Our PROVEN ABILITY



Consulmet has a proven ability to consistently and successfully complete challenging projects in different parts of the world, often in remote and isolated areas.

We are always **willing and ready to consider our client's specific requirements** including Fund Raising, Project Execution models and Contractual Engagement.

Consulmet utilises its engineering and logistics center in Johannesburg as the primary source of its technology. It is registered with the South African Revenue Service as an importer and exporter and is a member of the South African Capital Equipment Export Council, administered by the South African Department of Trade and Industry. Consulmet is also a member of the Johannesburg Chamber of Commerce as well as the Angolan Chamber of Commerce. Consulmet also retains the services of dedicated clearing agents to expedite clearing of all trans-border business.

Consulmet has a list of preferential suppliers and individuals both locally and abroad, based on a set criterion and with whom we have long standing relationships. These suppliers and individuals provide goods and services that will meet our business needs based on quality, cost, risk, and supplier reliability & service, to enable smart purchasing decisions and better management of the company's cashflow.

In order to manage cashflows and equipment supply time frames on our projects, a project procurement planning program is drawn up at the beginning of each project. We supply and procure mining equipment, civil equipment, and tools for our own use as well as for mining houses & international buying houses. Our procurement department is fast and efficient with quotation turnaround times. Our project scope of supply includes but is not limited to: Civil equipment, tools, earth moving equipment, apron feeders, crushers, vibrating screens, motors, gearboxes, pumps, lubricants, cyclones, general consumables (including milled FeSi), equipment spares, electrical supplies, conveyor systems, steel and platework, hoppers, containerised MCC's, containerised offices & ablutions, magnetic separators, thickeners & flocculent plants, vibrating grizzly's, XRT (X-Ray transmission) diamond sorters, scrubbers, various valves, steel piping, HDPE piping, rubber hoses, tube feeders, spirals and generators.

Our procurement department has experience in the following fields:

- Buying and stock control
- Warehousing
- Logistics
- Demand planning
- Imports and exports
- Supplier negotiations
- On site material handling

Our procurement process includes:

- Identification of goods and services required per project to meet the client's requirements.
- Assess and select vendors.
- Negotiation of payment and contract terms with selected suppliers.
- Finalisation of purchase orders.
- Receive and inspect delivered goods.
- Receive invoice and process payment.
- Maintain accurate record of Invoices.

We adjust our process and suppliers, as trends and markets change.

PARTNERSHIPS

Consulmet (Pty) Limited has formed preferential partnerships with established companies in the industry with whom we have had professional and satisfactory working relationships, enabling knowledgeable and seamless deliveries. These companies are:

- Prime Resources
Specialisation: geological exploration and EIA specialists
- Euro Technologies
Specialisation: civil and structural engineering
- Minco Electrical
Specialisation: electrical design, supply and erection
- Sync Systems
Specialisation: electrical design, supply and erection
- Eicon
Specialisation: Electrical design, supply and erection
- CDE
Specialisation: Equipment supply
- Consulmet Construction
Specialisation: plant fabrication, refurbishment and erection
- MPTEQ
Specialisation: selected process plant equipment such as thickeners, filter press plants and SX/EW Plants.

AWARDS

Consulmet (Pty) Limited was awarded the Exporter of the year in the R1-R2 Billion per annum category for Services as well as the Exporter of the year in the R1-R2 Billion per annum category for manufacturing by the South African Export Council for 2023.



Our

INTERNATIONAL CERTIFICATIONS

Consulmet (Pty) Limited has achieved Compliance Certification (CE) in the following Directives: Machinery, Electromagnetic Compatibility, Construction Products including Construction Council and Regulations. Certificate Number 2024042523 which is valid until 24 April 2027 allows for the export to the EU for 30TPH; 70TPH; 150TPH and 200TPH Dense Medium Separation (DMS) Units.

Certificate of Compliance

CE



We hereby declare that the technical file of product complied with the requirement of directives 2006/42/EC Machinery Directive, 2014/30/EU Electromagnetic Compatibility Directive, Construction Products (CPD/CPR) Council Directive 89/106/EEC (CPD) / Regulation (EU) No 305/2011 (CPR)

Certificate No.: 2024042523

Manufacturer
Name : CONSULMET(PTY) LTD
Address : 15 FRIESLAND DRIVE, LONGMEADOW SOUTH, BUSINESS, ESTATE, MODDERFONTEIN 1644, JOHANNESBURG, SOUTH AFRICA
Product Name : 150TPH DENSE MEDIUM SEPARATION (DMS) UNIT
30TPH DENSE MEDIUM SEPARATION (DMS) UNIT
70TPH DENSE MEDIUM SEPARATION (DMS) UNIT
200TPH DENSE MEDIUM SEPARATION (DMS) UNIT

Complies with the requirements applicable to it
The quality system file has been assessed, approved and is subject to continuous surveillance according to the Directives 2006/42/EC Machinery Directive, 2014/30/EU Electromagnetic Compatibility Directive, Construction Products (CPD/CPR) Council Directive 89/106/EEC (CPD) / Regulation (EU) No 305/2011 (CPR)

This certificate is issued under the following conditions:

1. It applies only to the quality system maintained in the manufacture of above referenced models and it does not substitute the design or type examination procedures, if requested.
2. The certificate remains valid until the manufacturing conditions or the quality systems are changed.
3. The certificate validity is conditioned by positive results or surveillance audits.
4. The CE mark as shown above can be used, under the responsibility of the manufacturer, after completion of an EC Declaration of conformity and compliance with all relevant EC Directives. The statement is based on a single evaluation of one sample of above mentioned product. It does not imply an assessment of the whole production.

Validity of this certificate can be verified at www.eurocertverify.com

Date of Certification	25th April 2024
1 st Surveillance Audit Due	24th April 2025
2 nd Surveillance Audit Due	24th April 2026
Certificate Expiry (subject to the company maintaining its system to the required standard)	24th April 2027


Authorised Signatory



This certificate is the property of Eurocert Inspection Limited and shall be returned immediately on request.
International House, 10 Churchill Way, Cardiff, United Kingdom, CF10 2HE
Website:- www.eurocertverify.com, Email:- info@eurocertverify.com
Company No. 11956886

CONSULMET CONSTRUCTION

We have invested heavily in our own fabrication capabilities to uniquely position Consulmet to deliver high quality, fast-track projects. The purpose built Consulmet Construction facility in Klerksdorp is seen below.



INFRASTRUCTURE

Due to client demand, Consulmet has established an Infrastructure department and has employed specialists in the fields of commercial construction, housing, roads, drainage, storm water and civil construction works to accommodate these functions in-house. The main drive behind this department was due to the huge Infrastructure development that accompanied the 180TPH diamond processing plant at Koidu, Sierra Leone.

The Department is responsible for the architectural designs, geo-technical reports, civil designs, construction, installation and implementation of the above-mentioned fields on a LSTK basis. All design work carried out uses the industry standard AutoCAD Inventor design tools which feature full 3-D rendering of all components. This practice eliminates conceptual errors in design, by way of clear visualization of the final solution.

Industry

APPROVED STANDARDS

All work is done with the following industry and customer approved standards:

- SANS with our own internal quality control system supporting this.
- South Africa Mines Health and Safety Act
- SABS
- ISO 9001:2000 for all steel structures produced.
- Fulton's concrete technology
- Design mix and materials testing Process.
- Mix design process.
- Geotechnical and civil investigation
- SAPPMA approve suppliers for HDPE pipes.
- Testing AND SPECIFICATION PROCESS.

Minimising site errors and optimising site erection time is key to successful delivery, and for that reason the trial erection of modules and or plants is considered to be a standard.

Trial erection and testing facilities are seen below.



Our TEAM

Derek Lahee

Managing Director

DMS and gravity separation process consultant with experience in over 50 gravity separation projects world-wide.

Derek also has experience in the commissioning and operation of Gold Recovery Process Plants.

Wildu Mostert

Operations Director

Project- and Construction Manager with extensive experience in executing large-scale projects in remote locations. Project Sponsor for various projects from inception, to commissioning and operating the plants. Experience in the projects and mining industry for 25 years & director for the past 15 years. He is a registered Professional Construction Manager at the SACPCMP.

Justin Macnab

Projects Director

Mechanical Engineer with 20 years experience in the engineering and mining industry. Responsible for overall management of projects. Including liaising with donors, coordinating and leading partners, supervising members of the project team, and overseeing project implementation, financial and administrative oversight, risk management, compliance, reporting and monitoring and evaluation of the projects.

Gavin Boyle

HR & Finance Director

Materials handling, crushing and milling expert with over 25 years experience in plant design, equipment specification and process consulting including major experience in Africa.



Full turnkey ore preparation and materials handling plant

Our OFFICES

HEAD OFFICE & WAREHOUSE FACILITIES



Consulmet's head office situated at **15 Friesland Drive, Longmeadow Business Estate South, Modderfontein, Johannesburg, Gauteng, South Africa.**



Consulmet's warehouse facilities are situated at , **6 Friesland Drive, Longmeadow Business Estate South, as well as Avalon Road, Modderfontein, Johannesburg, Gauteng, South Africa**



TURNKEY SOLUTION

Consulmet is a metallurgical consulting/process engineering and design project house, capable of handling full turnkey projects including stand-alone front-ends, DMS's, spiral plants, crushing and recovery modules, mobile plants, process development as well as feasibility study packages, including all related mining infrastructure. Infrastructure includes power generation and reticulation, water treatment and reticulation, sewerage treatment and reticulation, roads, workshops, housing, mess facilities, security systems, stores, culverts, reservoirs, slimes dams and tailings facilities. With the utilisation of the latest technology Consulmet can produce cost effective plants.

Part of the services rendered is the transport and installation of entire processing plants and/or spares to any required location in Africa. Consulmet is well-experienced in successfully supplying, operating and constructing processing plants and spares in Africa.

Consulmet specialises in the application of customised modular recovery solutions for the mining and exploration sector of the minerals and metals industries. Modular technologies bridge the gap between artisanal level mining or exploration activities and the large economies of scale operations.

Consulmet specialises in providing full technical backups for all its installations after successful handover of projects.

As a result of the in-depth knowledge of processing plants, separate modules, expected wear areas, various suppliers' product knowledge and engineering divisions, Consulmet specialises in the assistance of Operations and Critical and Strategic spares lists.

Due to the quantity of spares procured through Consulmet for various projects, the Client can receive the most competitive deal in the selected spares requirements.

Consulmet specialises in the on-going supply of spares requirements that the Client may request and the execution of the request up to delivery to the Client's nominated address.



Our

PROJECTS



150 tph DMS Plant for KOIDU, **Sierra Leone**



Gold Processing, **South Africa**



Copper Tank House, **Zambia**



Solvent extraction storage dams, **Democratic Republic of Congo**



Chromite spiral plant 3D model, **Thabazimbi**



Chromite Spiral Plant Completed Installation, **Thabazimbi**



40 tph PGM Flotation Plant, Jubilee Metals, **Brits, South Africa**



Screen installation at mineral processing plant satellite chrome, **Rustenburg, South Africa**



Zinc Refinery, **South Africa**



Concentrator Plant, **Steelpoort, Limpopo, South Africa**



Flotation Concentrate Thickener, **Steelport, Limpopo, South Africa**



Ball Mill Installation, **Steelport, Limpopo, South Africa**



Thickener Installation, **Steelpoort**, Limpopo, South Africa



Nickel debottlenecking stainless steel tank farm, **Rustenburg**, South Africa



Consulmet Infrastructure Division City Power tamper proof electrical kiosks, design, fabricate & field installation.
City Power South Africa



600 tph Skid mounted zircon Slurry Plant, Queensland Australia



Copper Spiral Plant, **Democratic Republic of Congo**



Copper Beneficiation plant, **Democratic Republic of Congo**



DMS Kamfundwa copper plant, Gécamines, **Democratic Republic of Congo**



Crusher Kamfundwa copper plant, Gécamines, **Democratic Republic of Congo**



DMS and spiral plant, Kamfundwa copper plant, Gécamines, **Democratic Republic of Congo**



Mobile DMS Plant, Alexkor, **Northern Cape, South Africa**



Autoclave design, fabrication and installation, **Thabazimbi, South Africa**



Standard DMS treatment plant, **typical trial assembly**



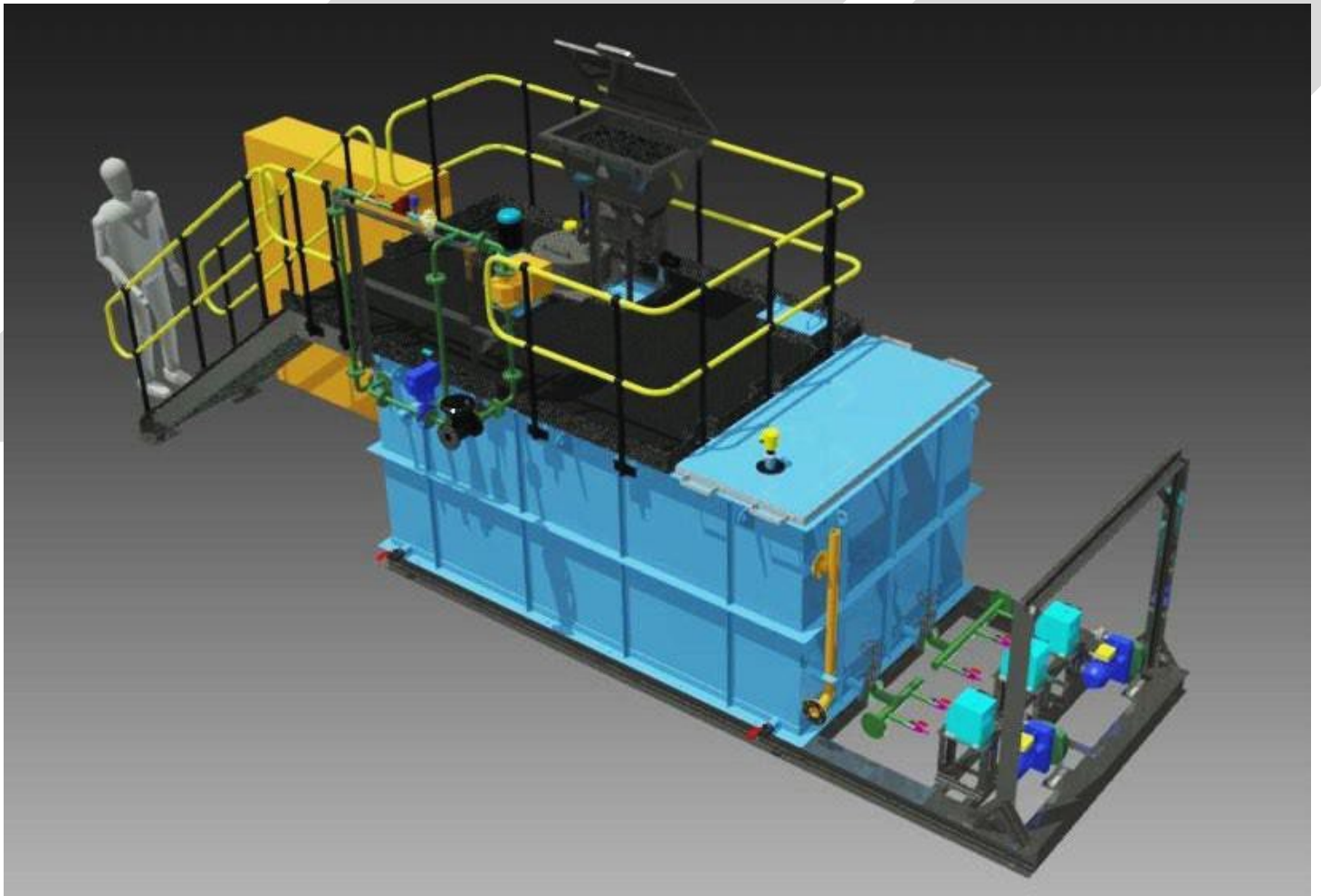
450 tons per hour coal DMS trial assembly at Consulmet fabrication works and completed installation
Stuart Coal, Delmas, South Africa



20 TPH Skid Mounted DMS Plant, **Merafe Resources, South Africa**



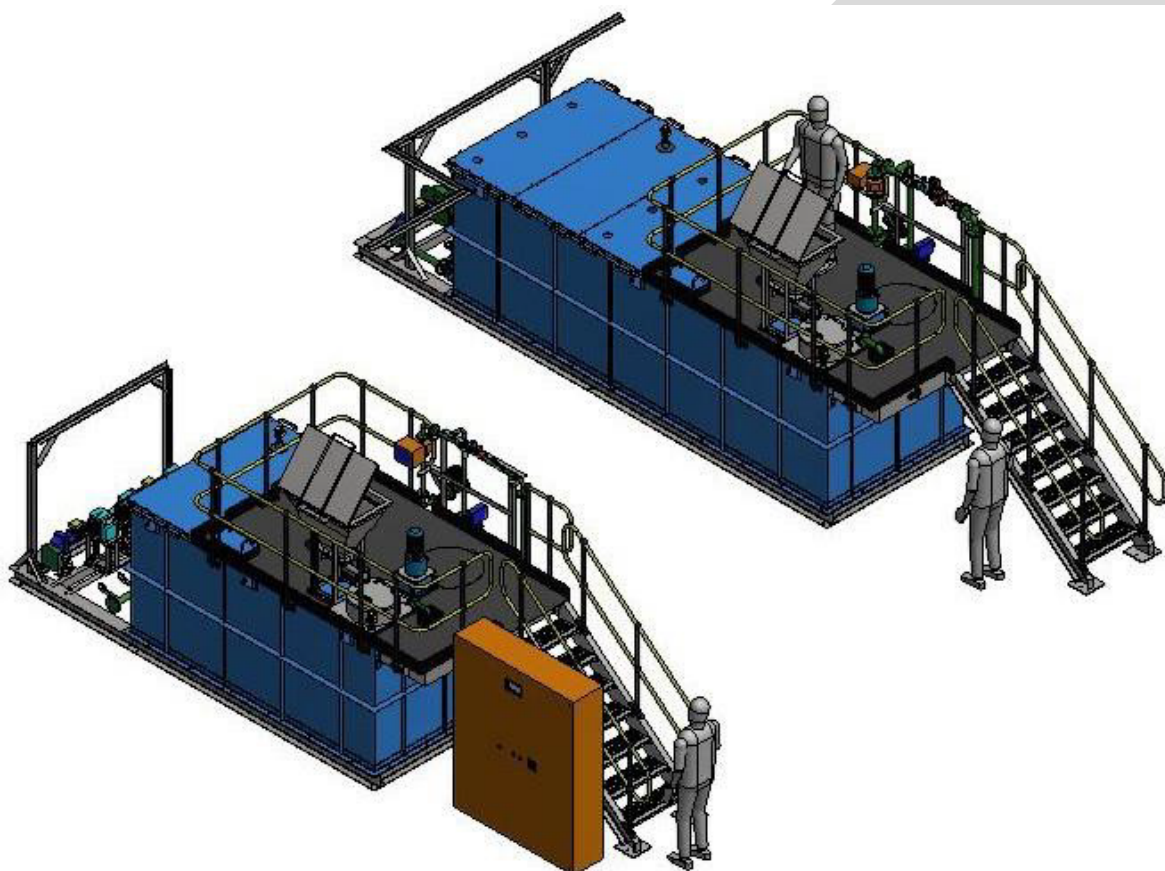
Iron Ore Plant for Territory Iron, **Northern Territory, Australia**



Flocculant mixing – hydrating and dosing plant, **generic 3D view**



CMET 1000 Flocculant Plant installed at Gold One's Modder east. **Springs, South Africa**



Conti-flow Range - Hydration and Dosing Plants, **generic 3D view**



CMET 3 30 000 Flocculant Plant, during trial erection – installed at Kassinga Iron Ore, **Angola**



Reagent Bulk offloading and transfer plant, **Husab mine Swakopmund, Namibia**



70tph Platinum Groups Metal's (PGM's) Flotation Plant - Brits, South Africa



70tph Platinum Groups Metal's (PGM's) Flotation Plant - Brits, South Africa



Water recovery system, 49.8m Ø Hi-rate Thickener - Luele, Angola



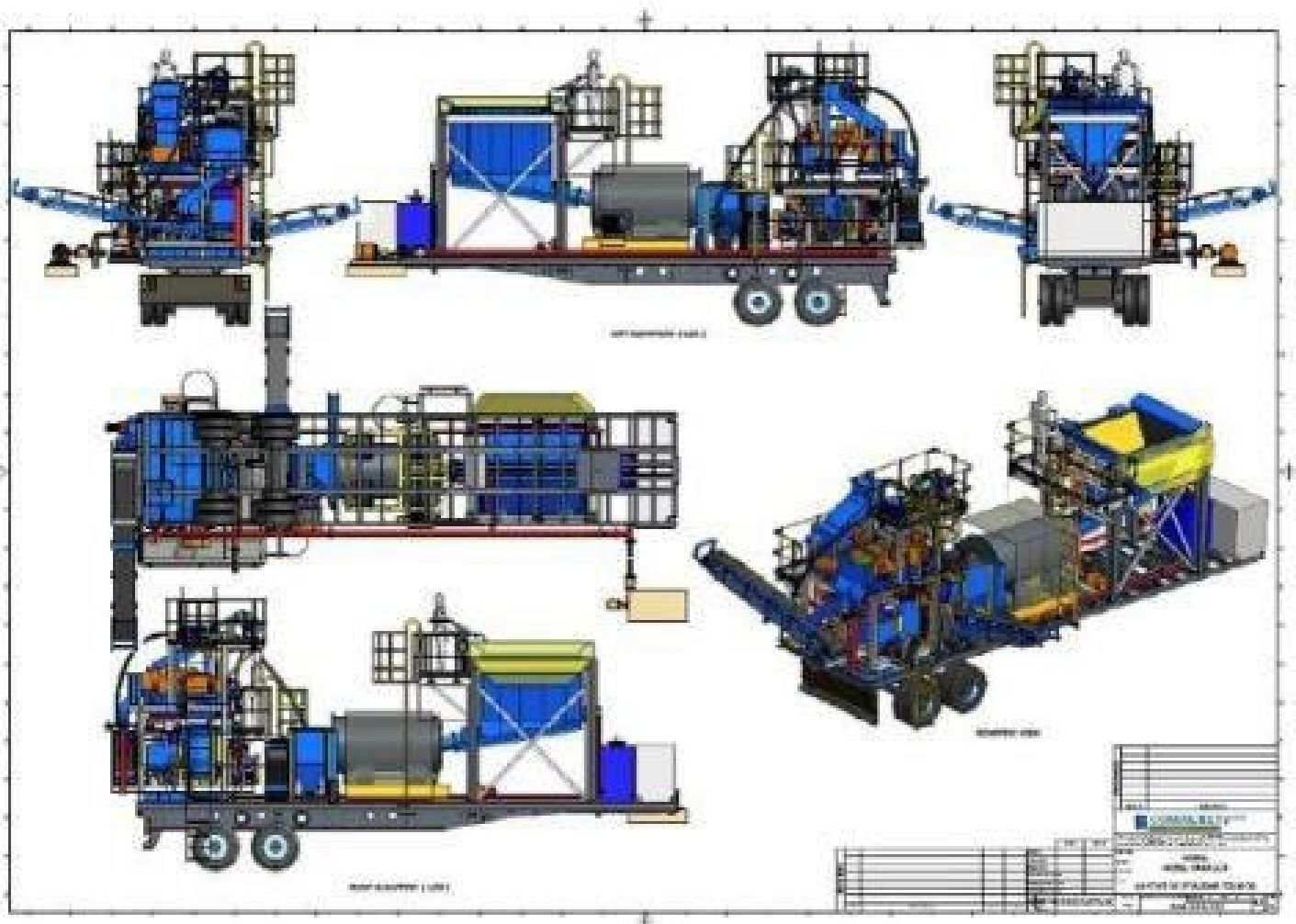
Typical scrubber and screen installation



600tph Treatment plant, primary scrubbing area, Mozambique



30tph DMS Plant, Commodity: Antimony, Turkey



Explorer 10, Exploration plant – alluvial gold



Design and supply of a complete diamond sampling/processing plant including a 30tph DMS module, International underwater sampling limited, Namibia



Floating barge pump system, **Angola**



Return Water Dam, **Angola**



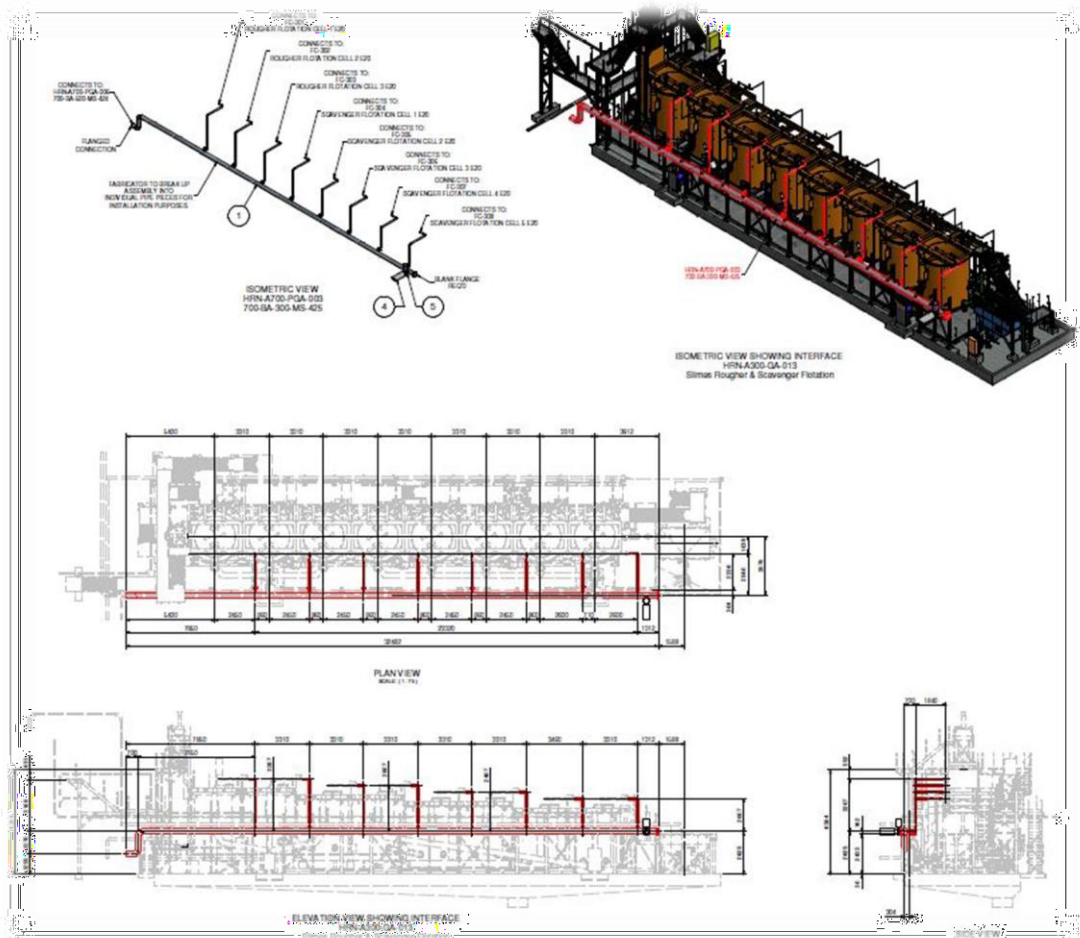
Tailings Storage Facility, Capacity: 30mil m³/12 years, **Northern Cape**



227 Carat high-quality Diamond recovered at **Lulo, Angola**



Reagents and air services Installation, Jubilee Platinum, Brits, South Africa



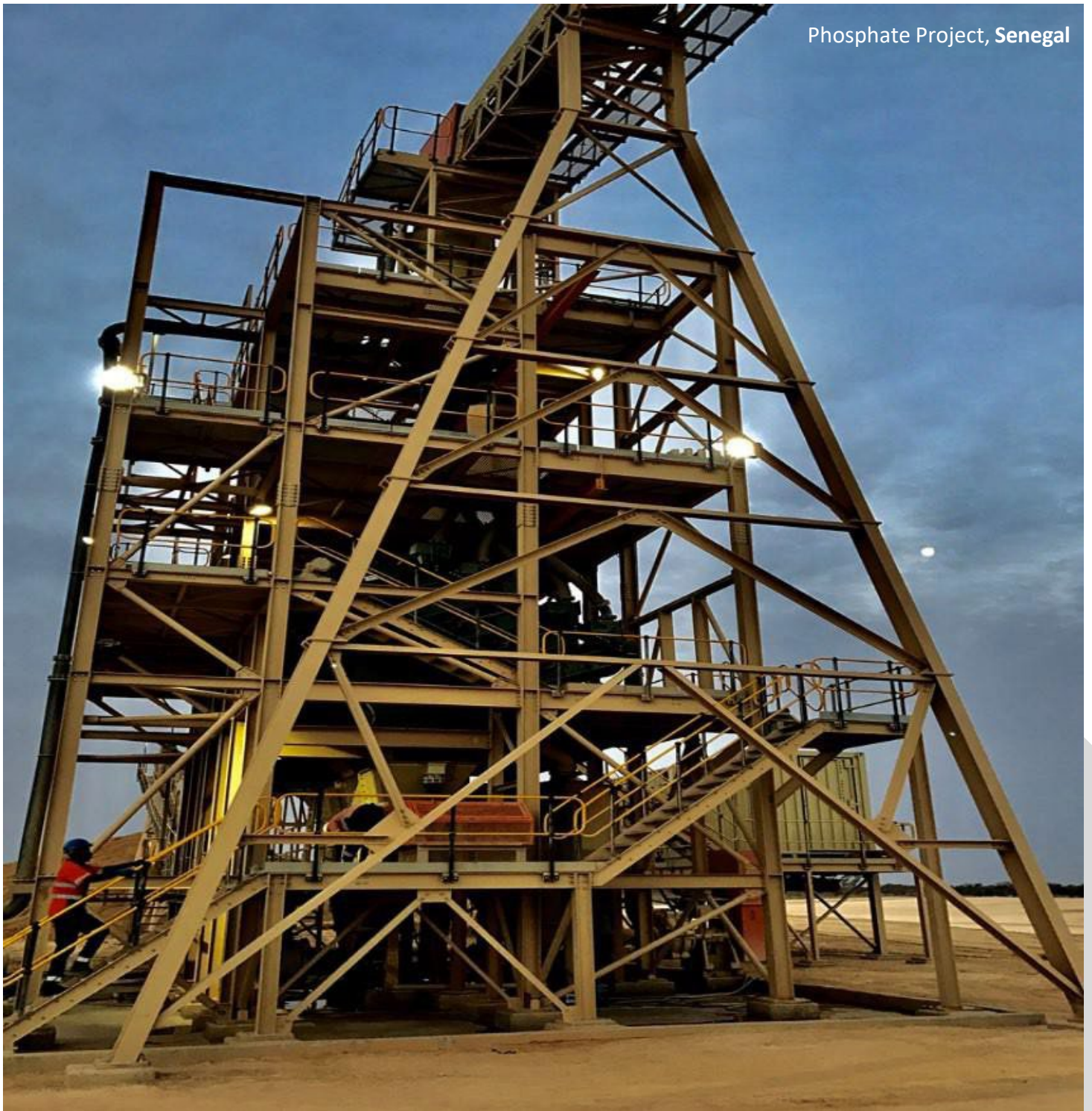
Typical 3D Piping design showing plant interface.



50 tph DMS, Meya Mining, **Sierra Leone**



476 Carat gem found, **Sierra Leone**





BK11 Logwasher, Amulet diamonds, **Botswana**



BK11 Logwasher, Amulet diamonds, **Botswana**



R200 Million, Mothae Diamond Plant, **Lesotho**



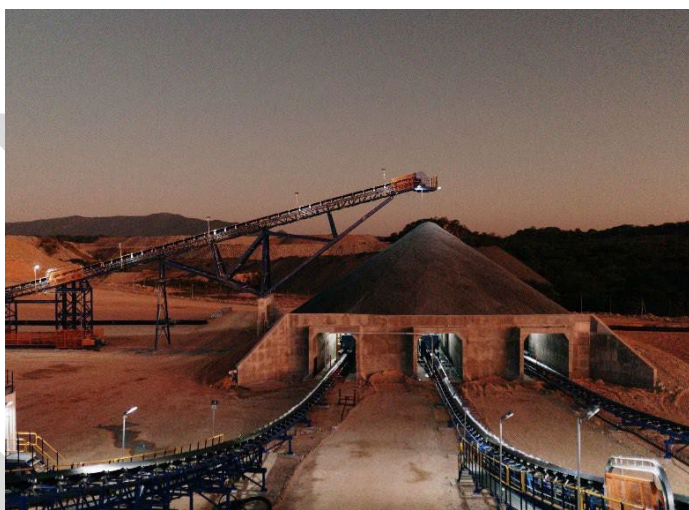
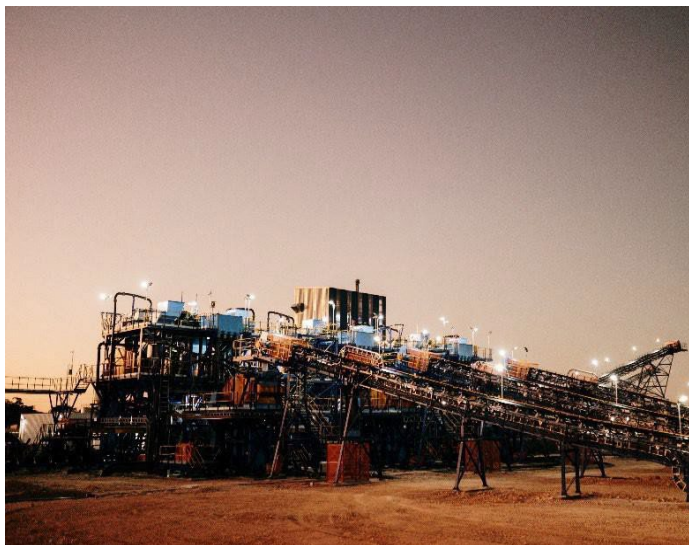
Diamonds found - LUCAPA'S New Mothae mine, Lesotho



R900 Million, Murowa Diamond Plant, **Zimbabwe**



R900 Million, Murowa Diamond Plant, **Zimbabwe**



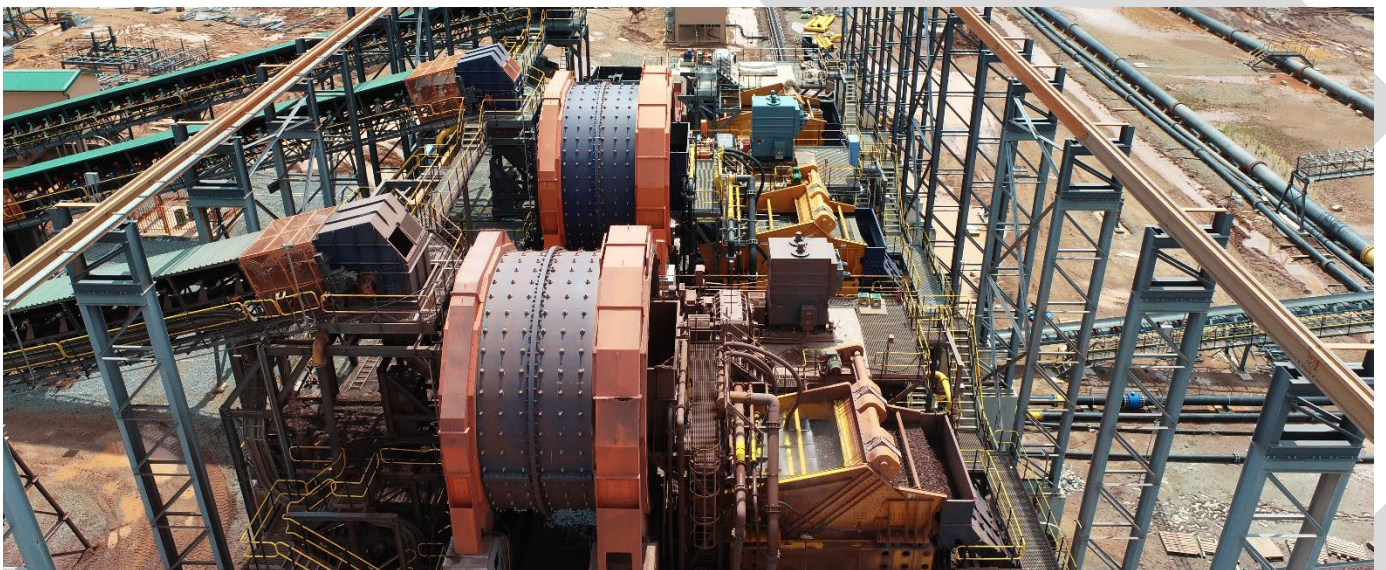
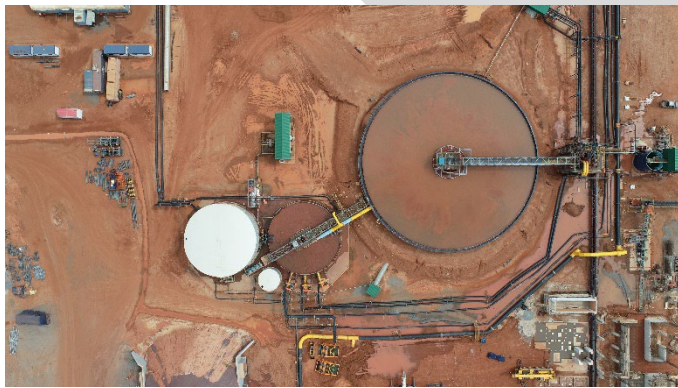
R900 Million, Murowa diamond plant, **Zimbabwe**



Wet-front end module with containers installation, Lucapa diamonds, **Angola**



Luele diamond mine, Angola





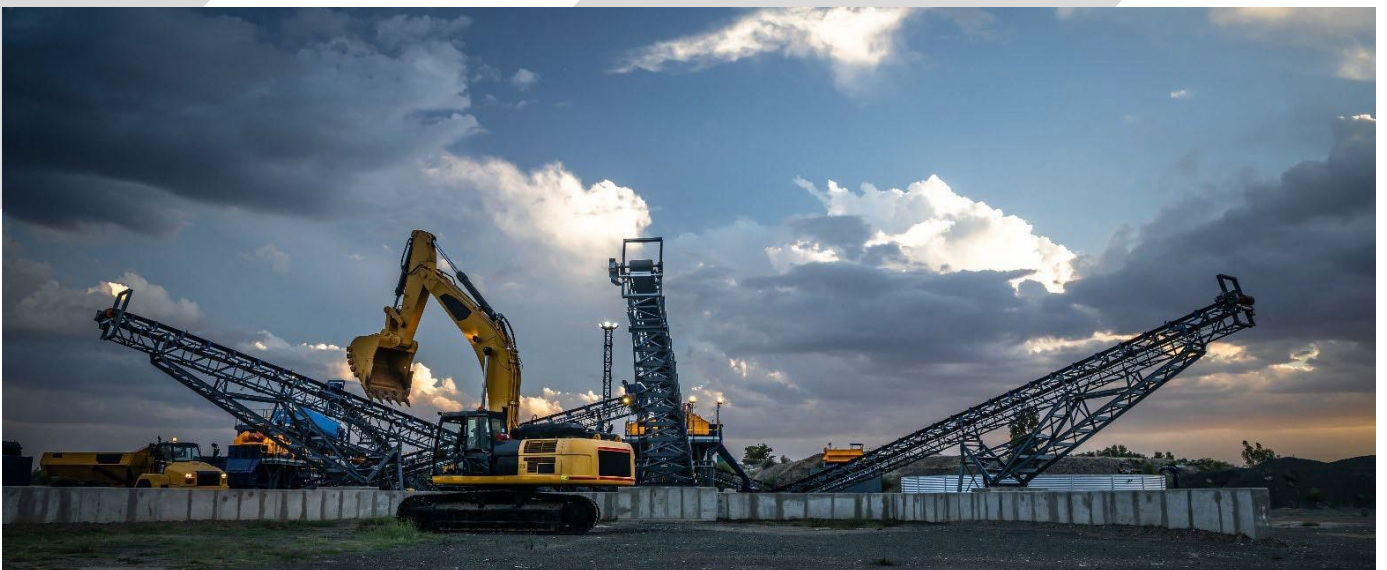
Meya diamond mine, Sierra Leone



160 tph Iron ore super high DMS plant, GravMax, Northern Cape, South Africa



550 tph Iron ore crushing plant, Northern Cape, South Africa



Operations, Care & Maintenance, **Samada**



Overland Conveyor, Stuart Coal, **Delmas, South Africa**



Overland Conveyor, Stuart Coal, **Delmas, South Africa**

PROFILE OF EXPERIENCE

Consulmet and its sister companies have executed in excess of 100 projects and feasibility studies. We have included a reference of some of the more significant ones below.

Client	Project	Commodity	Status/date completed	Location
Montepuez Ruby Mining <i>A Gemfields Company</i>	600tph treatment plant, Treatment Plant TP2 – 600 TPH and Scavenger Recovery Plant	Rubies	Current	Mozambique
SM do Luele	Design, supply and installation of a geological sampling plant including a 20tph DMS module	Diamonds	Current	Angola
Endiama Mining Luele Diamond Plant	1500tph Diamond processing treatment plant, Including: Primary Crushing Module, Autogenous Mills, Screening Module, XRT, Recrush Recovery and water reticulation.	Diamonds	Current Commenced 2021	Angola
Endiama Mining Sangamina	100tph early start weathered kimberlite tailings production plant including: 150tph feed preparation module, 50tph DMS module, DMS ancillaries and Final X-Ray recovery including Flowsort X-ray equipment.	Diamonds	Current	Angola
Rio Tinto exploration	50-70tph Kimberlite bulk sampling plant, supply and installation	Diamonds	Current	Angola
Balatek	500tph ROM treatment plant	Iron Ore	Current	DRC
Luso Global Mining	150tph ROM alluvial feed preparation plant, 65tph modular DMS plant with ancillaries, and a Flowsort X-ray recovery module.	Diamonds	2025	Angola
Somiluana, Sociedade Mineira	Somiluana, Central Recovery Plant Supply	Diamonds	2024	Angola
Sociedade Mineira de Chitotolo	2x 65tph DMS Modules	Diamonds	2024	Angola
Meya Mining, Sierra Leone	Near Infra-red sorting plant – Design	-	2024	Sierra Leone
Rio Tinto	Kimberlite bulk sampling plant engineering services	Diamonds	2024	Angola
Gümüštaş Madencilik	Design and Supply of a 150tph DMS module, Ex works completion	Lead, Zinc,Copper	2024	Turkey

Client	Project	Commodity	Status/date completed	Location
Millbridge Industria Mineira	100tph ROM Alluvial/weathered kimberlite treatment plant comprising of: 100tph wet front end Secondary cleaning module 50tph modular DMS plant and final Flowsort X-Ray recovery module (middlings and coarse)	Diamonds	2024	Angola
Lucapa Diamonds	Design and supply of 2 containerised flocculant plants	Diamonds	2024	Angola
Lucapa Diamonds	Design and supply 2 coarse XRT plant, glovebox upgrades	Diamonds	2023	Angola
Lucapa Diamonds	New recovery plant for a 50tph DMS plant	Diamonds	2023	Angola
Gem Diamonds	1100tph Primary Crushing Area LSTK Design, fabrication, supply, erection, and commissioning of Crushing Plant including Primary Crushing, Module Screening Module, Secondary Crushing Module	Diamonds	2023	Letseng, Lesotho
GravMax	Iron Ore Super High Dense Media Separation (SHDMS) Plant Engineering, Procurement and Construction (EPC) of a 160tph iron ore DMS plant and associated modules	Iron Ore	2023	Northern Cape, South Africa
Seneca	550tph Iron Ore Crushing Plant	Iron Ore	2022	Eastern Cape, South Africa
YCL Holdings	30tph DMS Module	Antimony	2022	Turkey
Lucapa Diamonds	70-100tph Infield screening plant/Wet front end	Diamonds	2022	Angola
Vedanta	Design, fabricate, supply and installation of a Zinc Bleed Rougher Flotation Circuit and Zinc Scavenger Flotation Circuit to improve the Zinc recovery and overall performance of the processing plant. (2 off modules) Zn bleed rougher circuit handling 91 t/h (226 m ³ /h) (15 % of HF) and a Zn rougher scavenger circuit handling the full feed (540 t/h) (1355 m ³ /h)	Zinc	2022	Namibia

Client	Project	Commodity	Status/date completed	Location
Lucapa Diamonds	20-30 tph Kimberlite Crushing Plant	Diamonds	2022	Angola
Lucapa Diamonds	50tph Kimberlite Sampling Plant Design and supply of sorting and export facility	Diamonds	2022	Angola
Sperrgebiet Diamond Mining	Sorting Facility	Diamonds	2022	Namibia
Sociedade Mineira de Kaixepa	Design and supply of 200tph DMS module	Diamonds	2022	Angola
Mistracel	Design and supply of 200tph DMS, feed conveyor, electrics, structures, trial, and erection plus water testing at Klerksdorp and stripping, loading of containers – ex works.	Diamonds	2022	Angola
Afritin Mining	Commodity: Tin Feasibility study	Tin	2022	Namibia
Mothae Upgrade 2A	Run of mine upgrade to 250TPH	Diamonds	2022	Lesotho
Gecamines (Kamfundwa)	Kamfundwa refurbishment project, 300TPH processing plant	Copper	2022	Kamfundwa
Murowa Diamonds	Design, supply, erection, and commissioning of a complete 500tph Kimberlite Diamond Processing Plant including: <ul style="list-style-type: none"> - Front end feed with pre-primary and primary crushing Scrubbing and secondary crushing - Coarse XRT circuit Tertiary crushing - 3 off 200tph DMS's - Quaternary crushing - Final recovery (4 x double pass Debtech and 1 x recon single pass Debtech) - Water recovery circuit - Total mechanical and electrical installation 	Diamonds	2022	Zimbabwe
DRC BFS	Sulphur Burning Sulphuric Acid Plant	Sulphur	2021	DRC
Lodestone BFS	Iron Ore Processing Plant Design	Iron Ore	2021	Namibia
Stuart Coal, Delmas	800tph Crossover Conveyor – Design, Fabrication, and Installation	Coal	2021	Delmas
MRM, Gemfields	250tph Belt Feeder complete with Hopper, addition	Rubies	2021	Mozambique

Client	Project	Commodity	Status/date completed	Location
Moneyline	Core Drilling Sample Plant	Diamonds	2021	Eversto
Imperius	400tph trommel addition	Diamonds	2020	Angola
Nelesco	Supply of XRT equipment including conveyors and other services	Diamonds	2020	South Africa
Murray & Roberts Cementation	Design, fabricate and supply underground conveyor systems, each configuration comprises a 22-ton ROM hopper with grizzly and Wingwalls, a 26m 1800 conveyor and crusher discharge chute. 37kW drives, 630mm diameter belt drive pulleys, 2m wide drum. (4 off systems)	Coal	2020	South Africa
Debswana	Engineering services to conduct a desktop study for bulk sampling plant facilities for Jwaneng Mine, Orapa, Letlhakane and Damtshaa Mines	Diamond	2020	Botswana
Anglo American (RSA)	Anglo American Copper De-Bottlenecking Bankable Feasibility study autoclave installation base metal refinery	Copper	2020	Rustenburg
MEYA Mining	Design, supply, erection and commission of a 50tph Complete Diamond Processing Plant with Crushing Circuits and Recovery Tomra XRT large diamond recovery. This includes the Final recovery with 2 x Flow Sort diamond recovery machines and Tomra XRT	Diamond	2019	Sierra Leone, MEYA Diamond Mine
Exxaro Coal (Leeuwpan)	Design, supply and construct construction services for the replacement of DMS chutes. Includes the final installation of chutes within the existing plant structures.	Coal	2019	Leeuwpan
Gem Diamonds	Treatment plant review for Letšeng Diamonds processing plants to establish causal factors and remedial actions for the lack in comparative performance.	Diamonds	2019	Lesotho
MEYA Mining	MEYA Diamond Mine 5.6km water pipeline installed and future upgrades planned for 2018	Diamonds	2018	Sierra Leone

Client	Project	Commodity	Status/date completed	Location
BK11, Amulet Diamonds Ltd	Consulmet re-designed, constructed and refurbished the existing diamond process plant which had been under care and maintenance for five years. Included is a log washer at the crushing circuit and at the Recovery Section and Tomra X-ray machine, fine and coarse Flow Sort section was installed. Consulmet is currently operating the mine.	Diamonds	Completed project – Operational contract	Botswana
NFC Development (DRC) Company Limited Sarl	Automated sodium metabisulfite (SMBS) dosing plant	Chemical compound	2017	South Africa
Breamore Platinum	Centrifuge Installation at the platinum mine	Platinum	2018	Brits
Exxaro	Design, supply and construct 2 x 40tph Modular Coal Spiral Plants for Leeuwpan Colliery.	Coal	2018	Leeuwpan
Kumba Iron Ore	Process Engineer to assist the Processing Operational Readiness – Sishen Modular Expansion team.	Iron Ore	2018	South Africa
SAIL Group	Sail Phase 2 & 3 Detailed design of a 100 & 150 KTPM Chromite and PGM recovery plant	Chromite & Platinum	2018	Sierra Leone
SAIL Group	Sail Phase 1 Due diligence on Blackchrome operations	Chromite	2018	Sierra Leone
Guter Mining	Plant upgrade, Coarse X-ray Plant, Dump Treatment Plant, Yellow Plant Upgrade and Crushing Plant	Diamonds	2017	Conakry, Guinea
Cronimet Chrome Mining	Thaba Mine expansion 90tph chromite beneficiation plant, crushing, spirals unit and tailings thickener	Chromite	2017	South Africa
Nkomati Anthracite Plant Upgrade	Nkomati Anthracite Upgrade plant to 150tph Coal Wash Plant	Anthracite	2017	Nkomati, South Africa
Husab	Ferrous Sulphate Ferrous Sulphate makeup plant	Sulphate	2017	Namibia
Anglo America/RBMR	Nickle tank house storage facility	Nickel	2017	South Africa
Alexkor	Refurbishment of Existing front-end and DMS plant plus up-grading	Diamonds	2017	South Africa

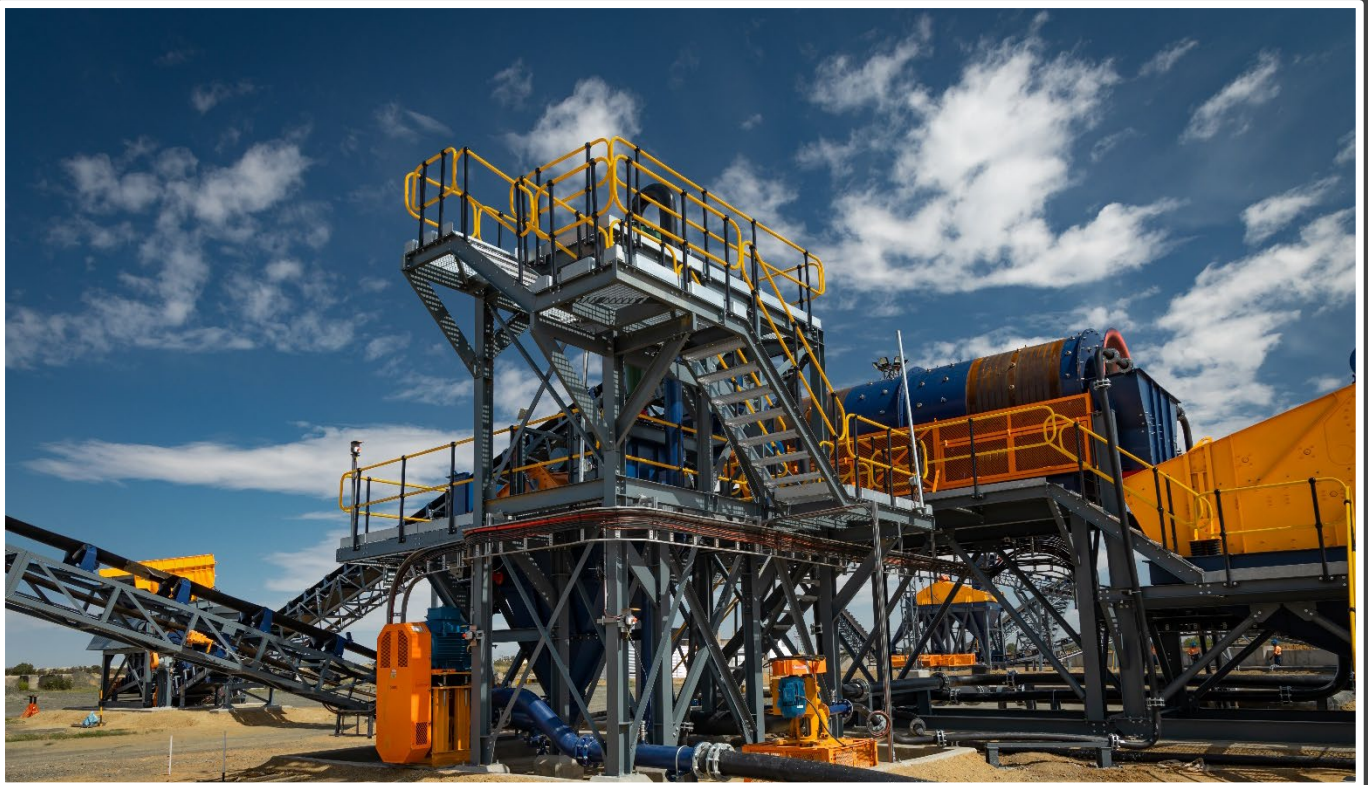
Client	Project	Commodity	Status/date completed	Location
Jubilee Platinum	Hernic Tailings Treatment Project (PGM Float Plant)70tph Platinum Group Metals (PGM's) flotation plant	Platinum	2016	South Africa
Jubilee, Dikolong Chrome mining	Chromite processing plant/crushing & spirals unit	Chromite	2016	Steelpoort
Andritz Delkor	Maaden flocculent plants	Various	2016	Saudi Arabia
Lucapa Diamonds	Mothae Diamond Mine Design supply and construction of a 150tph diamond processing plant in the Maluti Mountains	Diamonds	2016	Maluti Mountains
Minemakers Australia	Trial Phosphates Mining Process plant	Phosphate	2016	Gadde Bissik Mine, Senegal
Gem Diamonds	Design, supply, erection, commissioning & operation of an 180th Kimberlite Diamond Processing Plant and ancillaries. An autogenous milling circuit and concentrator was installed on the plant.	Diamonds	2015 - 2016	Ghaghoo Diamond Mine
Boteti/Karowe Diamonds	Tomra Consulmet operates and maintains fourteen Tomra XRT Diamond Recovery Machines and has done so over the last 3,5 years. Approximately eight thousand tons are processed in a day with size fractions from -4mm right up to - 120mm.	Diamonds	2015 - 2018	Botswana
Husab	Ferrous Sulphate Make-Up System39tph Ferrous Sulphate Make-Up system	Ferrous Sulphate	May 2015	Swakop Uranium
Thaba Mine Expansion Project	Cronimet Chrome Mining 140tph Chromite Beneficiation Plant (7stage spiral plant)	Chromite	2015	Rustenburg, South Africa
Study	Study of new (proprietary) process from Lateritic ores New hydrometallurgical process for recovery of Nickel and Cobalt from Lateritic ores	Nickel & Cobalt	2015	Consulmet Australia
Jubilee PGM Projects	Jubilee Platinum Feasibility studies for the LSTK execution of 2 PGM concentrator plants	Platinum	2015	Rustenburg, South Africa
Northern Platinum	Design, fabrication of Brownfields installation of Platinum Autoclave	Platinum	2015	Rustenburg, South Africa

Client	Project	Commodity	Status/date completed	Location
Alexkor	Installation and commissioning of 30tph mobile plant	Diamonds	2016	Northern Cape, South Africa
Petra Diamonds	Design Phase – Upgrade of diamond plant	Diamonds	2015	Tanzania
De Beers	Superkolong Design, supply and commissioning of 30tph DMS	Diamonds	2015	Kimberley, South Africa
PBA	Refurbishment of existing diamond processing equipment	Diamonds	2015	Mitchells Bay, South Africa
Oresome Resources	Urquhart Point Mineral Sands Project 110tph Skid Mounted Heavy Mineral Sands Beneficiation Plant	Rutile	2014	Northern Australia
ESIM Iron Ore	2MTPY Iron Ore (Magnetite) Concentrate Plant	Iron Ore	2014	Ehya Sepahan Iron Mine Company
Cronimet Chrome Mining SA	140ktpm Chromite Product Beneficiation Plant	Chromite	2015	Rustenburg, South Africa
ENRC frontier	400tph recovery plant	Rutile	2014	Northern Australia
Talis Platinum, NCP	Acid leach pilot plant/Chloroplast	Platinum	2014	Chloorkop, South Africa
Oresome, Urquhart Point	Rutile Recovery plant	Rutile	2014	Northern Australia
Stuart Coal	450 tons per hour, skid mounted coal DMS	Coal	2014	Delmas, South Africa
Anglo Platinum	Nickel Tank house de-bottlenecking project	Nickel	2014	Rustenburg, South Africa
Gem Diamonds	180tph Kimberlite diamond processing plant and ancillaries	Diamond	2015	Ghaghoo Diamonds
Western Desert Resources	Roper bar iron ore project, 250 tons per hour iron ore processing plant	Iron Ore	2014	Australia
ENRC	Comidé copper concentrator, 300 tons per hour elutriation and spiral plant	Copper	2013	DRC

Client	Project	Commodity	Status/date completed	Location
Alexkor	100 tph Diamond Front-end with 65tph DMS	Diamond	2013	Northern Cape, South Africa
Gecamines	Kamfundwa Copper Concentrator Copper Crushing, Screening and Dense Media Separation Plant as well as Spiral Plant for fines recovery	Copper	2013	DRC
Murray Zircon	Mobile rutile processing plant/skid mounted	Rutile	2013	Western Australia
Multotec	Sampling Pilot plant		2013	Perth, Australia
Virginia Capital Holdings	Leeuwpoort Tin Mine, Process engineering and test work	Tin	2013	Leeuwpoort, South Africa
Bellzone	Kalia Iron Ore Project -Bankable Feasibility Study for 10 M tons per annum Iron Ore Beneficiation Plant	Iron Ore	2013	Guinea
Ferrex PLC	Nayega Manganese Deposit, Process engineering and test work	Manganese	2012	Togo, Gabon
Anglo Platinum	Anglo Platinum concept studies, Consulmet Consulting specialist engineering studies		2012	Rustenburg, South africa
Anglo Platinum	Anglo Platinum commissioning and ramp-up Support		2012	Rustenburg, South africa
Sierra Rutile Limited	Sierra Rutile Dry Mining Plant, 2 x 250 tph Washing Plants for Rutile recovery	Rutile	2012	Sierra Leone
Tanzanian Royalty Exploration Corporation	Kigosi Gold Plant Execution of feasibility study for TRE	Gold	2012	Tanzania
Jubilee, Dikolong Chrome Mining	Chromite beneficiation plant/spiral units	Chromite	2011	Steelpoort, South Africa
Samancor	Heavy media separation Drum & DMS Installation	Ferrochrome	2011	Mooi-nooi, South Africa
Sylvania Platinum	Twefontein Flotation Plant, Design, supply and installation of PGM Flotation and Chromite spiral plant	Platinum	2011	Twefontein, South Africa
Multotec	Design and fabrication of a skid mounted cyclone and spirals test according to client specifications & shipped to Darwin Australia	Iron ore	2011	Darwin Australia

Client	Project	Commodity	Status/date completed	Location
Koidu Holdings	Koidu Diamond treatment plant, LSTK supply of USD100M diamond processing plant complete	Diamonds	2011	Sierra Leone
Sylvania Resources	Mooinooi Plant expansion Design of additional Ball Mill Circuit as well as chute design modifications	Chromite	2010	South Africa
Tulkubash Project	Feasibility Study for 50 tph Gold Beneficiation Plant – Tulkubash Krgyzstan	Gold	2010	Chaarat Gold, Krgyzstan
ASA Metals	Dilokong Chromite LSTK supply of 100 tph Chromite spiral plant for the production of Foundry grade Met grade and Chem grade. Chromite	Chromite	2009	Dikolong, South Africa
Oblique Engineering	Theresa Mining, Chromite Beneficiation plant, 40tph Chromite Spiral beneficiation plant	Chromite	2009	Brits, South Africa
The New Reclamation Group	Grandwell Diamonds Full LSTK supply of 100 tph Diamond Processing Plant including a preparation plant through DMS, final recovery and all aspects of security and operations.	Diamonds	2009	Zimbabwe
Prismatica	The design and fabrication of a 200 tph Front-end, 20tph DMS + Final Recovery Plant. The requirements necessitated a special design to handle the huge sand quantities		2008	Australia
Oblique Engineering	Stellite Chrome, Process design and detailed engineering of a 40 tph Chromite recovery plant	Chromite	008	Rustenburg, South Africa
International Underwater Sampling Limited	Ship mounted DMS Design of a Marine Sampling Plant including a 2400m ³ /hr front-end, 20tph DMS and final recovery plant	Diamonds	2008	Canada
Tati Nickel	Bankable study for Nickel beneficiation from Sulphide ores	Nickel	2008	Botswana
Anglo American	Recovery of Nickel and Cobalt by Chloride process Detail design of a pilot plant for the hydro-metallurgical recovery of Nickel from Limonite and Saprolite ores	Nickel & Cobalt	2008	Rustenburg, South Africa
Rio Tinto	Murowa Diamonds The design, procurement, manufacture, transportation and installation of a 200tph crushing and screening plant.	Diamonds	2008	Zimbabwe
Anglo American Platinum	Processing of Nickel laterites in Brazil, Complete feasibility study for 45 ktpa Nickel hydrometallurgical plant	Nickel	2008	Brazil

Client	Project	Commodity	Status/date completed	Location
Diacor	150 tph Front-end Plant The design and supply of the above plant to treat alluvial and Kimberlite with Recrush circuits. The project included complete transportation, erection and commissioning of the plant	Diamonds	2008	Middle Orange River area, South Africa
LUO	220tph Weathered Kimberlite Plant, Supply of full Turnkey Plant including water recovery, waste disposal and all other ancillaries	Diamonds	2008	Angola
BHP Billiton Angola	Mobile Plants 3 x 30tph complete mobile washing plants, including 3 x 10tph DMS units	Diamonds	2007	Angola
Sonop	2 x 150tph DMS Units Design, supply and commissioning of two DMS units	Diamonds	2007	Kimberley
Lace Diamond Mine	Diamond Processing Plant, Detailed design, supply and commissioning of a 220tph ROM Dump Re-treatment Plant, 100tph and 65tph DMS plants, 3tph Final recovery plant, Re-crush module and Water Recovery Circuit – design phase diamond recovery plant	Diamonds	2007	Kroonstad
Luarica Mine NE, Transhex	The design and supply of a 200tph front-end plant incorporating the direct tipping bin, primary scalping with VGF, scrubbing, screening and conveyor systems.	Diamonds	2006	Angola
Gemfields Holdings	Emerald Processing Plant Design and supply of a 20tph emerald processing plant on a turnkey basis	Emeralds	2006	Zambia
Eskom	Consultation and design of numerous plant upgrades, as well as procurement and supply of operating spares and major laboratory equipment for Eskom in Angola.		2005	LUO, Angola



Consulmet® (Pty) Limited

www.consulmet.com

15 Friesland Drive, Longmeadow Business Estate, Modderfontein 1644, Johannesburg, Gauteng
PO Box 93, Longmeadow, 1609, Johannesburg, South Africa
Tel: +27(0)11 608 0396 · Email: enquiries@consulmet.com
Co. Reg No 2005/013599/07 · VAT Reg No 4060188846