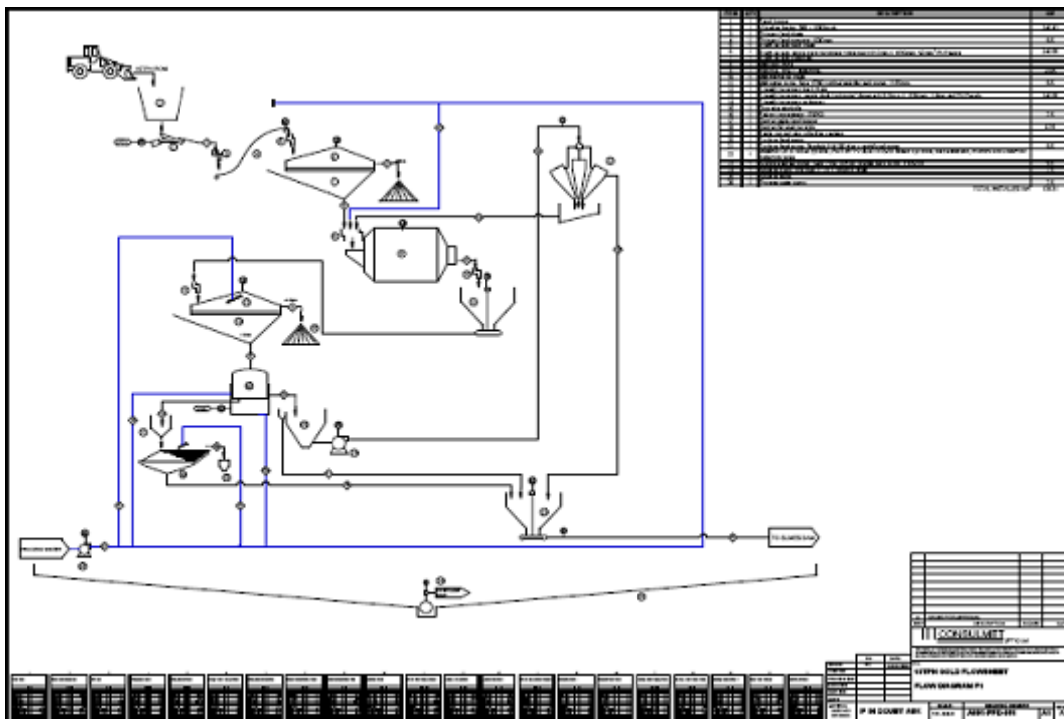


## CONSULMET METALS established 1 September 2008

We proudly announce the establishment of our sister company, Consulmet Metals (Pty) Limited at 1 September 2008.

Consulmet Metals is an output driven project engineering company capable of project execution from process design through to construction, commissioning and handover, specializing in the field of Metal Extraction. Consulmet Metals is able to execute order of magnitude studies as well as pre-feasibility and feasibility studies. They offer services at highly competitive rates due to flat structuring and hands-on management. In addition to conventional plant Consulmet Metals offers factory tested skid mounted plants for remote installation.

### Typical Flow Sheet and P&ID Development



#### CONTACT DETAILS:

Rupert Swanepoel  
Managing Director  
Physical Address:  
Unit 1, Westfield Place  
6 Friesland Drive  
Longmeadow Business  
Estate South  
Modderfontein 1644  
Johannesburg  
Tel: + 27 11 608 0396  
Fax: +27 11 608 0996

Cell: +27 83 463 1378  
Email: [rupert@consulmet.com](mailto:rupert@consulmet.com)  
Postal Address:  
P O Box 4346  
Kempton Park  
1620  
Gauteng